



Bringing value to Facility Management with IoT

Získejte know-how
o nákladech na správu budov.



Bringing value to Facility Management with IoT

Be more effective in big data management with Smart IOT Integration, saving budget for:

➤ Maintenance

➤ Energy

➤ Workplace

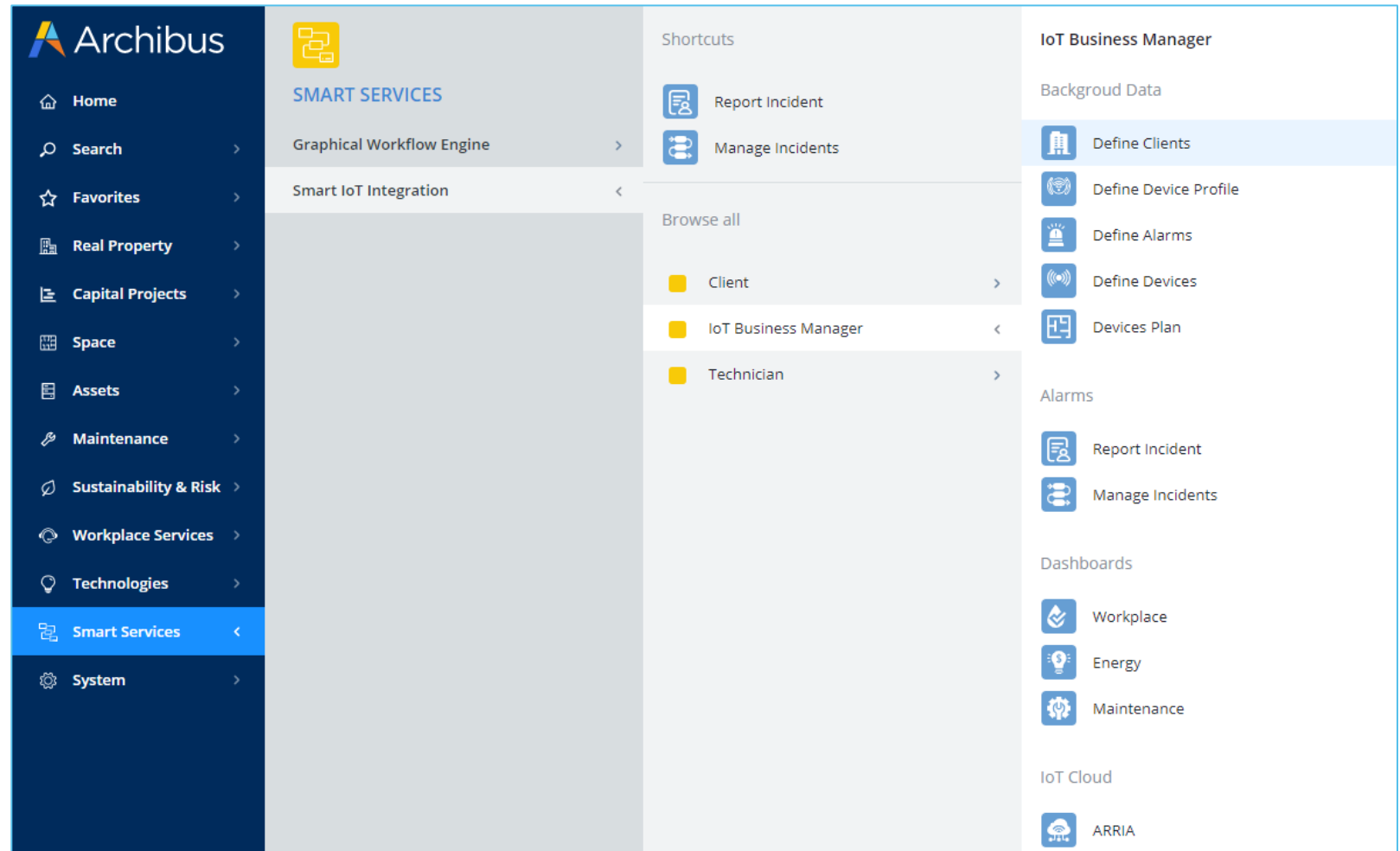


Empower ARCHIBUS competitive advantage by leveraging IOT data in building management

- Single point to **monitor & control** your building data
- **Real-time data** for space/assets/equipment allocation/use
- **BMS/ sensors integration**, despite the diversity of proprietary and off-the-shelf data protocols
- **Control** functionality for devices, not only for BMS (**budget savings**)
- **Real-Time and configurable Dashboards** for Consumption/Comfort/Occupancy
- **Automatic alarms** based on sensors threshold
- **Configurable intervention workflows**

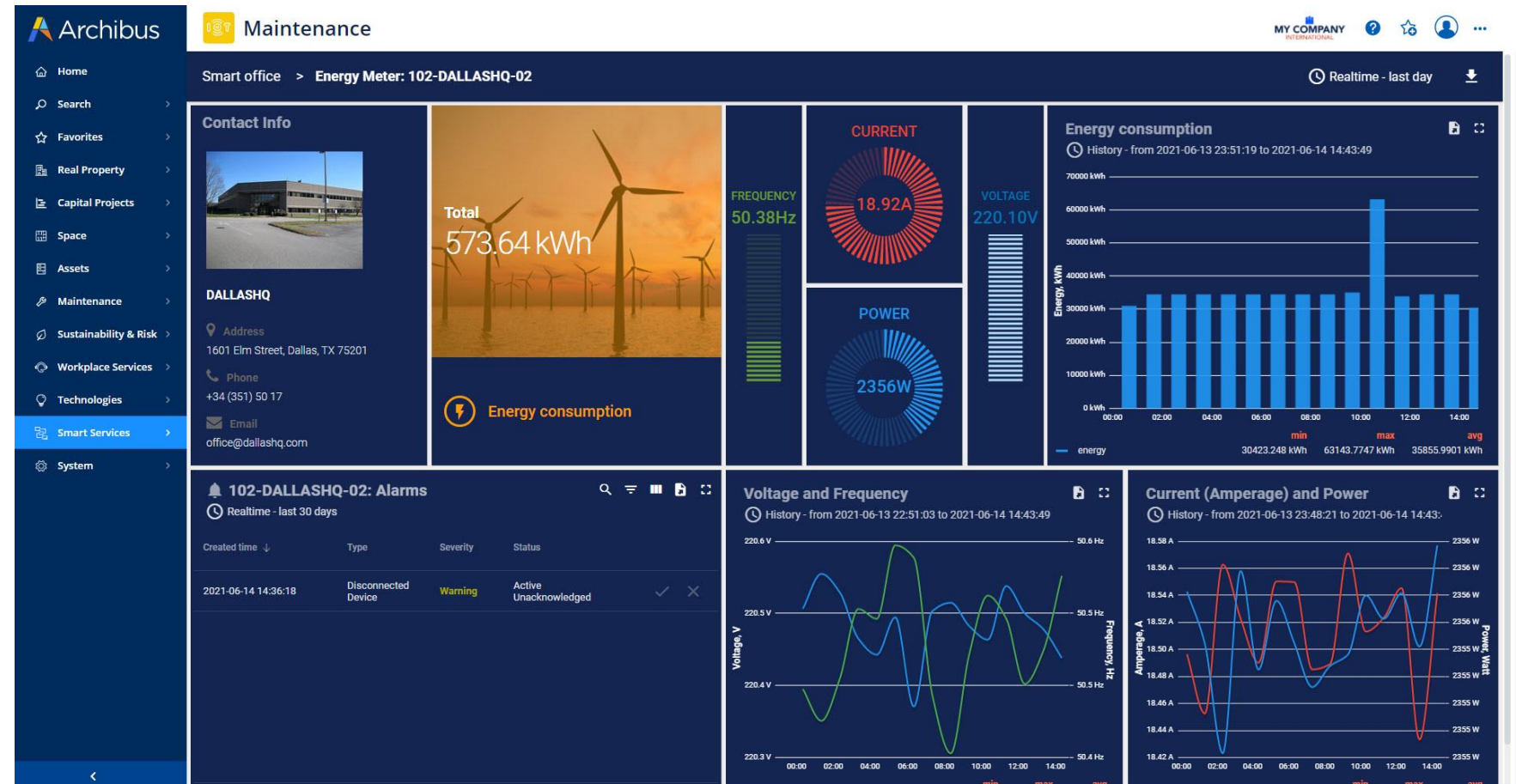
ARCHIBUS Smart IoT Integration add-on

Provides integration between ARCHIBUS and ARRIA IoT Cloud and uses GWE processes to initiate incidents and update back parameters on completion



IoT Dashboards

- Monitor energy consumption, indoor air quality or BMS alarms directly from your ARCHIBUS interface



Cost effective BMS / IoT integration

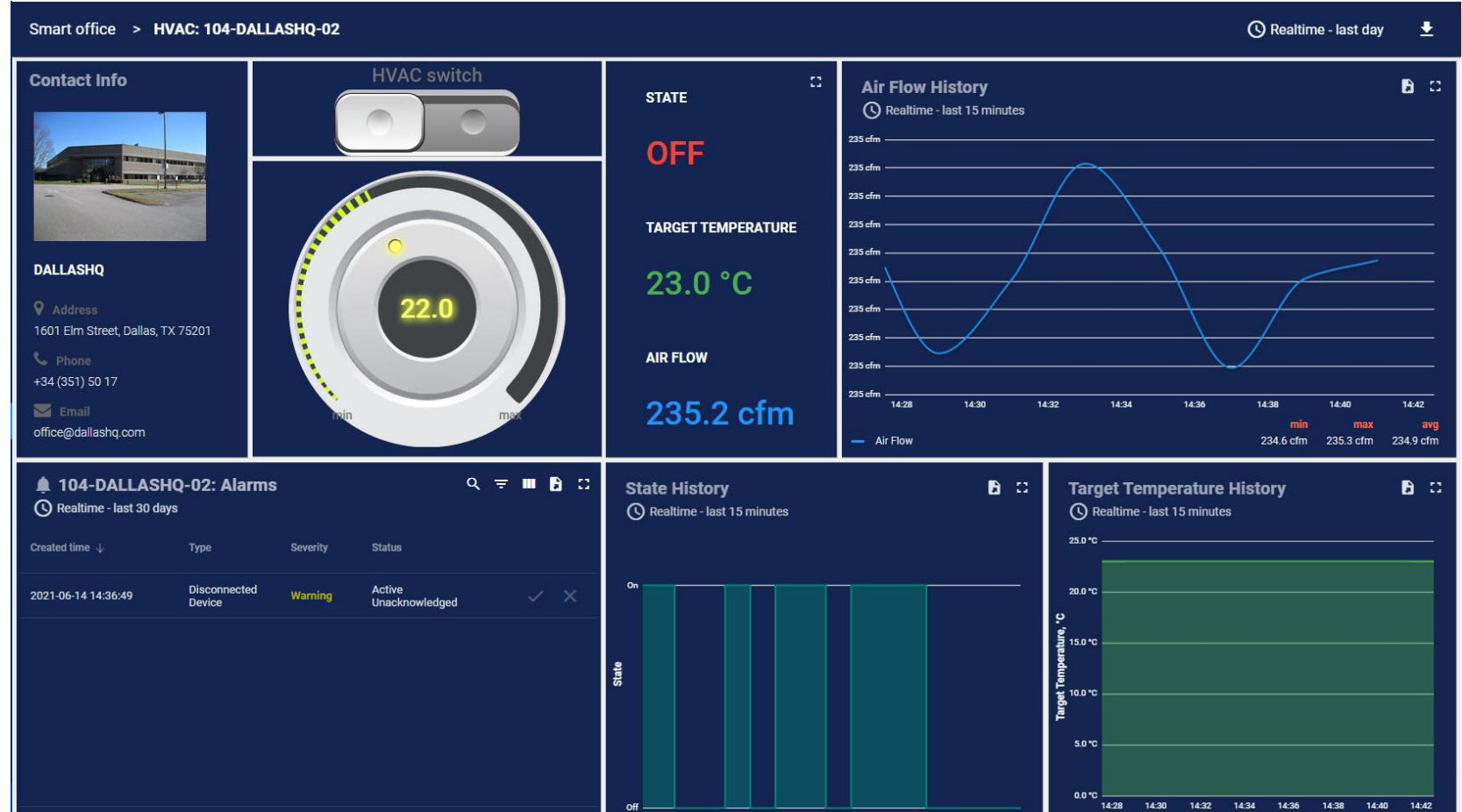
- GWE 4 IoT allows you to integrate in
- ARCHIBUS data from
- different BMS/ sensors
- **despite the diversity of proprietary and off-the-shelf data protocols**



Bidirectional integration with BMS

Remote control BMS from Archibus

- **Smart IoT allows you the remote control of all your BMS/ smart meters** directly from your ARCHIBUS platform
- Instantly **notify users** and / or operators about any critical events or unusual consumption levels



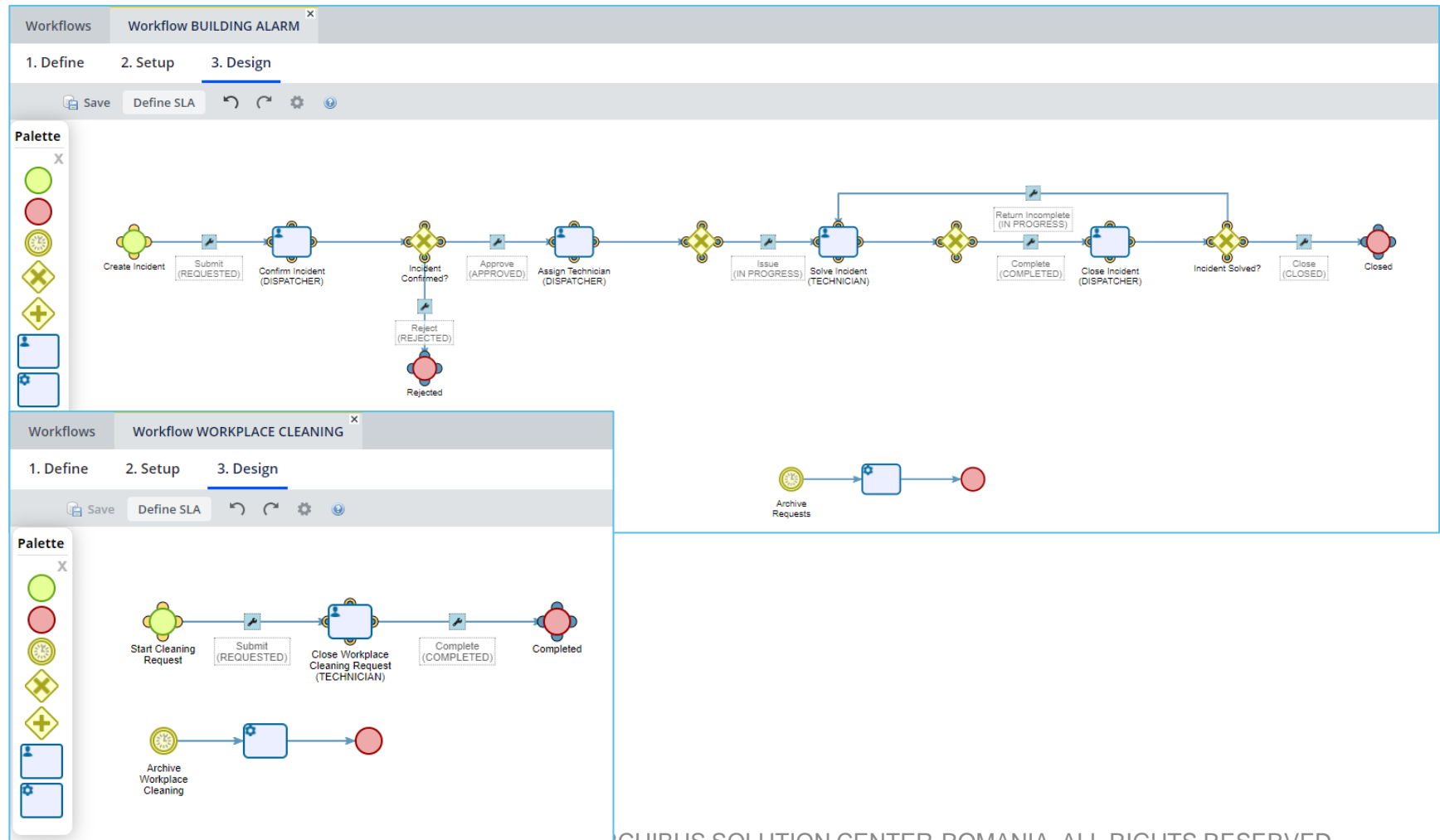
BMS Alarms trigger work requests or initiate GWE Workflows based on parameter change

- In case a parameter changes outside the normal values, ARRIA will automatically launch a
- Work Requests or a GWE workflow
- to designated Facility Management professionals
- As a result of the automation, SLA's will be enforced

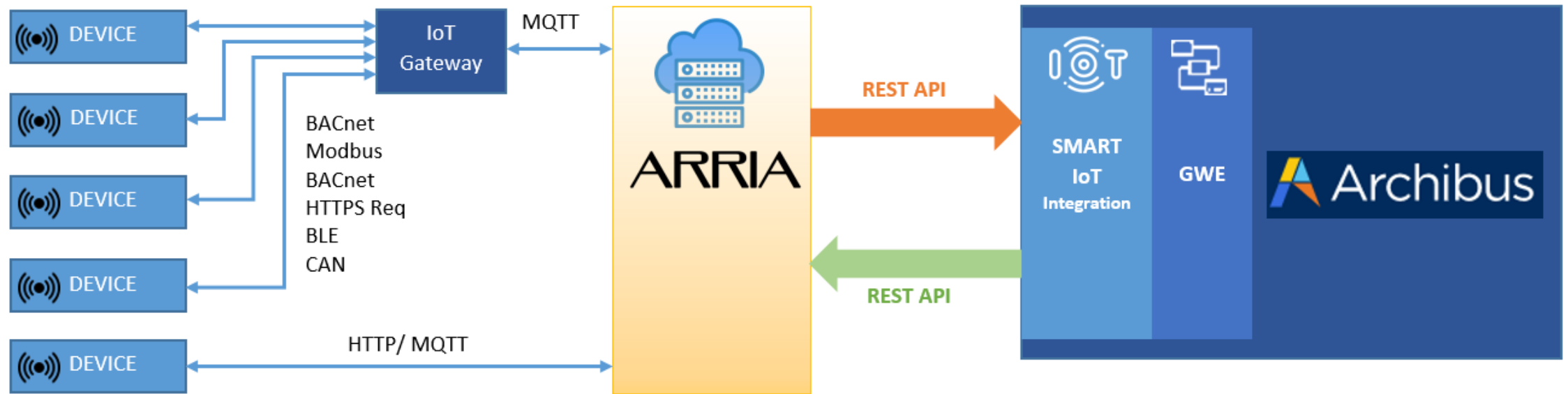
The screenshot displays two overlapping windows from the ARRIA IoT app. The top window, titled 'Building Alarm', has tabs for 'Manage Requests', 'Archived Requests', and 'Building Alarm'. It features buttons for 'Alarm Details', 'Reject', 'Approve', 'Action Log', and 'Diagram'. The form contains the following fields: Request ID (93), Requested By (AFM), Status (REQUESTED), Date Requested (1/25/2021), Time Requested (10:13 PM), Building Code (LX), Priority (High), Subject* (High Temperature), and Description* (Device 91-LX-00 temperature: 49°C. Created via ARRIA IoT app.). The bottom window, titled 'Work Request', has a 'Problem' tab and contains fields for Work Request Code (1150004221), Problem Type (TEMP. ADJUSTMENT), Description (Device 91-LX-00 temperature: 49.5°C. Created via ARRIA IoT app.), and Problem Location.

GWE processes: Building Alarms and Workplace Cleaning

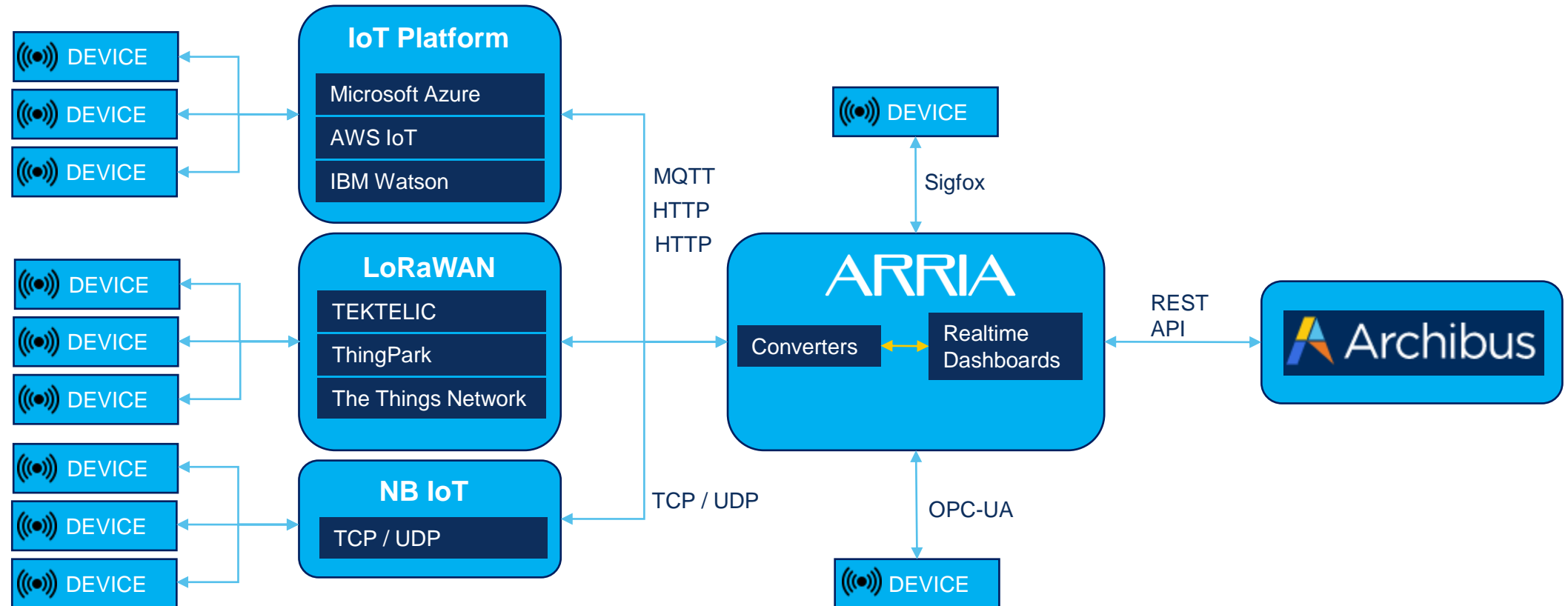
- Graphical Workflow Engine add-on provides processes required to initiate and solve incidents.
- e.g. ARRIA triggers an alarm which generates an incident in GWE and when the request is completed the GWE will update the status in the ARRIA platform)



System architecture



Platform Integration



Demo Use Cases

- I: Energy
 - Energy Manager monitors from Archibus dashboards the energy consumption data in real-time and decide to involve maintenance manager in order to find saving measures
- II: Workplace
 - Comfort & wellbeing: Workplace Manager monitors the temperature & air quality and adjusts parameters
 - Real-time space allocation and cleaning: Upon a workplace reservation, occupancy sensors integrated in the floor plan show real-time occupancy and release occupancy in case of employee absence. After workplace use, the space becomes available only after the cleaning task is confirmed
- III: Maintenance
 - Facility Manager monitors IoT parameters and decides to remotely adjust the temperature in one location
 - Alarms are automatically send if parameters exceed the optimal value
 - Alarms trigger a maintenance Work Request

If interested in Smart IoT Integration, please contact us:



Anna-Maria Linek
VP Business Development

ARCHIBUS SOLUTION CENTER - ROMANIA

Bucharest, Romania

Phone/Fax: +40 21 3118840

Phone/Fax: +40 21 3118839

Mobile: + 40.755.157811

Web: <https://www.archibus.ro/>